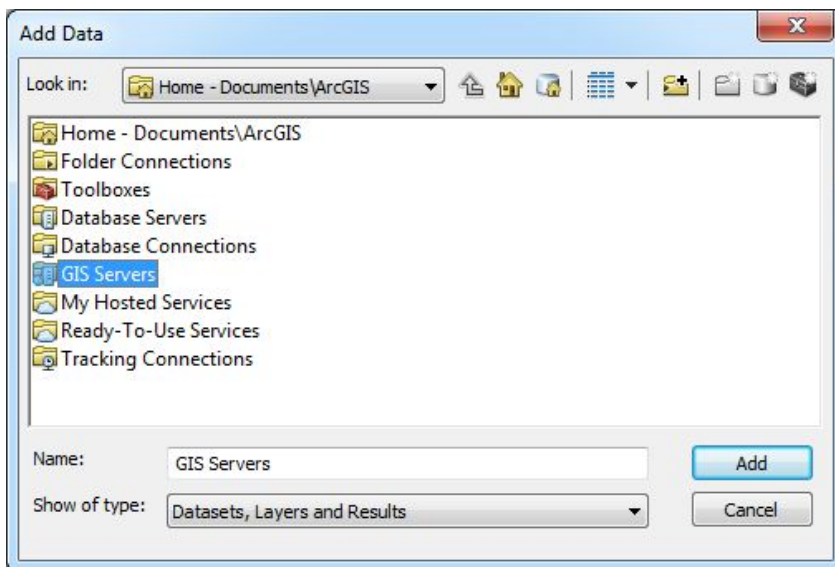


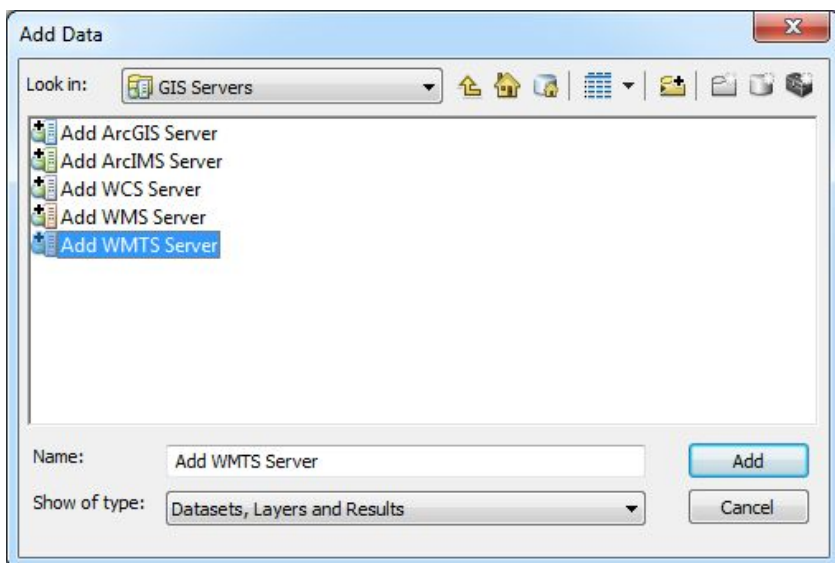


Testing AppGeo “WMS Appliance” for WMTS in ArcGIS

1. Enter **ArcMap**
2. Open the **Add Data** dialog
3. Select **GIS Servers**



4. Select **Add WMTS Server**



5. Enter either your WMS or WMTS URL into the “URL text box”:

Your URLs will have been provided by AppGeo via email may take one of two forms.

The first form has the login credentials “hashed” into a four word combination that’s part of the URL. The following is an example of a four word WMTS end-point (that is not operable):

<https://wms.appgeo.com/login/path/satire-initial-gold-dream/wmts/1.0.0/WMTSCapabilities.xml>

If using this form, you are done and should just hit “OK” on the dialog.

The other form does not contain the four words and is found below.

<https://wms.appgeo.com/wmts/1.0.0/WMTSCapabilities.xml>

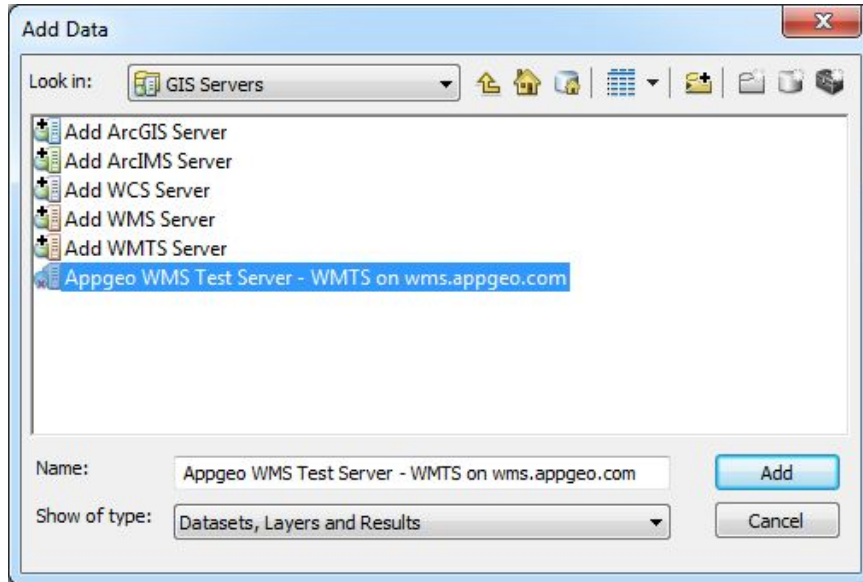
If you use this form, you must enter your AppGeo supplied credentials into the User/Password text boxes as illustrated below. Then hit “OK”.

The screenshot shows a dialog box titled "Add WMTS Server". It contains the following fields and controls:

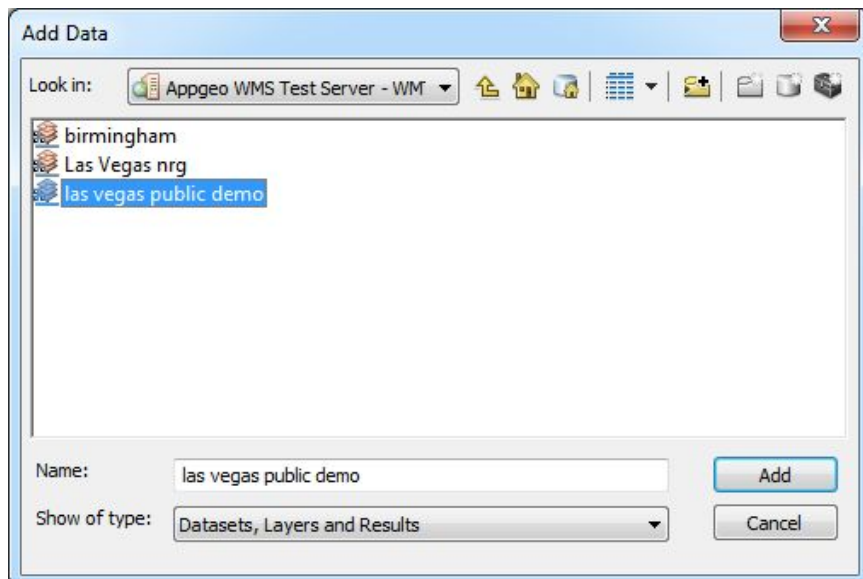
- URL:** A text box containing the URL `https://wms.appgeo.com/wmts/1.0.0/WMTSCapabilities.xml`.
- Examples:** Two example URLs are listed: `http://myserver/arcgis/rest/services/mymap/MapServer/WMTS/1.0.0/WMTSCapabilities.xml` and `http://www.myserver.com/maps.cgi?`
- Version:** A dropdown menu set to "Default version".
- Server Layers:** A section with a "Get Layers" button and a large empty rectangular area for displaying layers.
- Account (Optional):** A section with a "User:" text box containing "mgt", a "Password:" text box containing four dots, and a checked "Save Password" checkbox.
- Buttons:** "OK" and "Cancel" buttons at the bottom right.

7. The **AppGeo WMTS server** should now appear in your list of “GIS Servers”

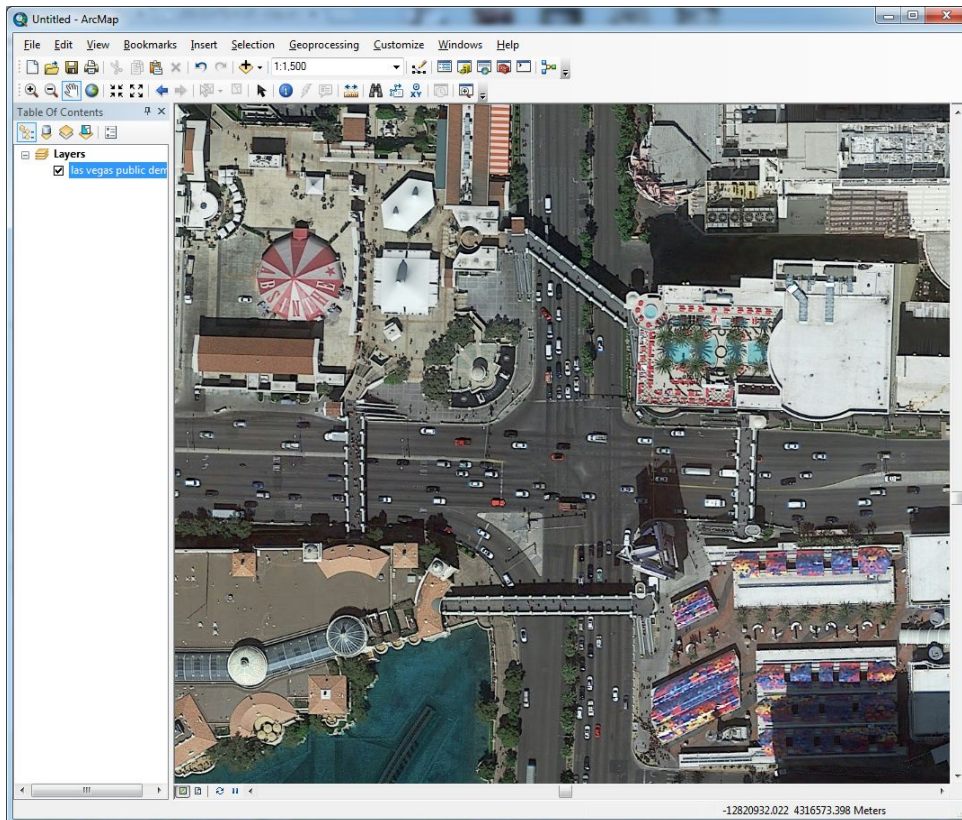
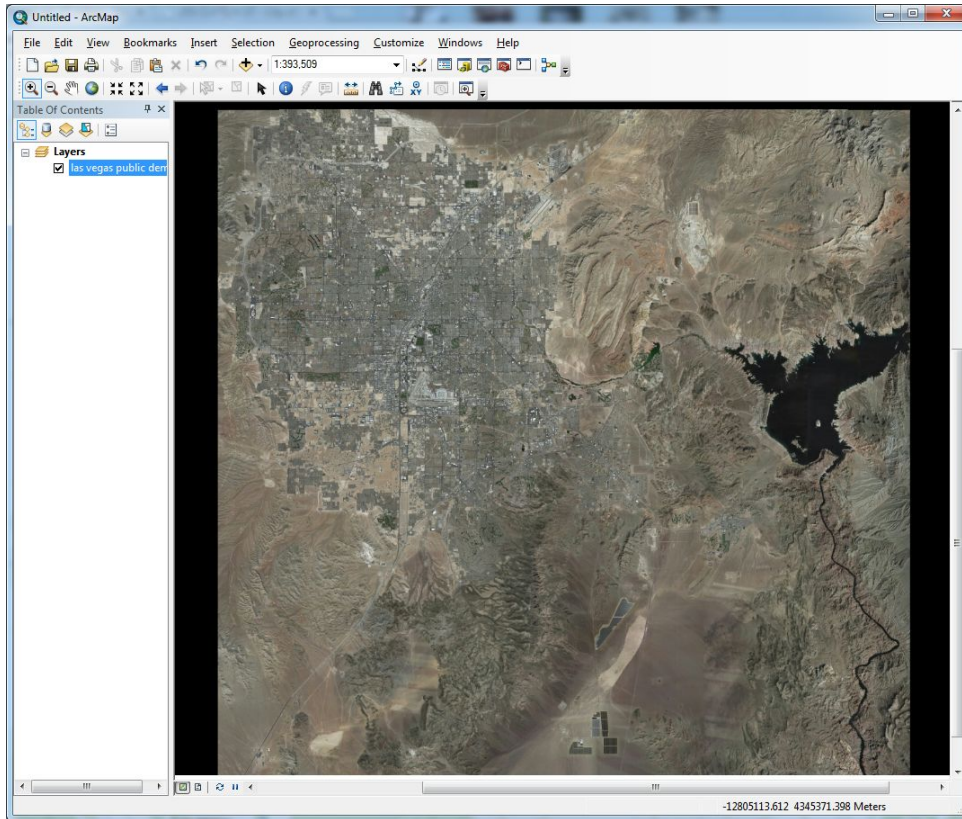
8. **Double click on the AppGeo WMTS server** to see the services that are available



9. **Double click on “las vegas public demo”** (or select, and hit “**Add**”) to add it to your map.



10. Have fun in ArcMap. Try printing and other activities. Please report any issues or oddities. Your usage will be tracked by the server.



Feel free to also try the WMS capability. Follow the same instructions, except for step 4, **Add WMS Server**, and use this URL/end-point: <https://wms.appgeo.com/wms> (or a supplied “four word” form equivalent).

This should work, with similar behavior, but you may have to navigate one extra set of “double-clicks” on the WMS service before the available layers are exposed.